

August 2, 2020

Monthly Weather Summary – July 2020

General

July was slightly warmer than average, due to its last week, during which a heat spell prevailed. On other days of the month, temperatures were mostly close to the average and on some of the days, even slightly below it.

The temperatures and the weather during the month

Temperatures during July were higher than the average (1995 – 2009) in the internal parts of the country by 0.5 to 1 degrees. In the Coastal Plain, they were close to the average or slightly above it. During nighttime, temperatures in the mountains were close to the average and in the other parts of the country they were higher than the average by 0.5 to 1 degrees.

During the first half of the month, temperatures were mostly close to the average, and in some of the days, they were even below it in the mountains and inland.

On the second half of the month, there was a warming tendency and it was mainly warmer than average in the mountains and inland during daytime. During nighttime, the temperatures in these regions were close to the average until the end of the second decade of the month and only later on they became higher. In the Coastal Plain, daytime temperatures were close to the average until the 22nd -23rd, while the nighttime temperatures were slightly above it most of the time.

Between the 26th and the 31st, a hot spell prevailed with temperatures reaching 34 to 36 degrees in the mountains, 36 to 38 degrees in the Negev and the Jezreel Valley, 38 to 40 degrees in the Hula Valley and the Kineret and 42 to 44 degrees in the Jordan Valley and the Arava. In the Coastal Plain and the Shfela, a severe heat stress was measured during noontime, due to a combination of 33 to 35 degrees with a relative humidity of 40% to 55%, whereas in the Coastal Strip, 31 to 32 degrees with a relative humidity of 65% to 75%.

Table 1: July 2020 temperatures¹ (°C) compared with the average

Region	Station	July 2020		Deviation from the average 1995-2009	
		Maximum	Minimum	Maximum	Minimum
Coastal Plain and the Shfela	Haifa (Technion)	29.2	22.9	+0.7	+0.3
	En HaHoresh	31.1	21.1	0.0	+1.3
	Bet Dagan	31.8	23.0	+0.3	+0.7
	Negba	31.9	21.9	+0.2	+0.6
Northern mountains	Elon (western Galilee)	30.6	21.1	+0.1	+0.1
	Merom Golan Picman	30.7	17.1	+1.5	+0.1
	Avne Etan	33.1	20.1	-0.2	+0.5
	Zefat Har Kenaan	31.0	20.5	+0.3	+0.6
	Tavor	34.3	22.4	+0.2	0.0
Northern valleys	Afula, Nir HaEmeq	34.8	21.8	+0.7	+0.5
	Kefar Blum	36.5	21.2	+0.9	+0.8
	Zemah	37.9	24.1	+0.2	+0.5
	Eden Farm (Bet Shean)	38.1	24.2	+0.5	+0.7
Central mountains	Karne Shomron	31.5	21.2	+0.7	+0.6
	Jerusalem	31.2	20.4	+1.2	+0.2
	Bet Jimal	32.8	21.3	-0.1	+0.1
	Rosh Zurim	29.1	18.8	+0.8	+0.1
Negev	Besor	31.9	21.2	-0.7	+0.5
	Arad	34.9	22.2	+0.2	+0.9
	Be'er Sheva	34.1	19.8	+0.7	+0.8
	Sede Boqer	40.9	31.2	+0.2	+0.7
Arava	Sedom	41.5	28.7	+1.1	+1.4
	Elat	29.2	22.9	+0.7	+0.3

¹ Due to installment of new temperature sensors, maximum temperatures might be higher by several tenths of °C when compared with readings of older sensors. This is currently being investigated.

Table 2: Extreme temperatures in July 2020 ($^{\circ}\text{C}$) compared with the past

Station	July 2020				Extreme Values in record				Period of measurements
	Extreme Max.		Extreme Min.		Extreme Max.		Extreme Max.		
	Temp.	Date	Temp.	Date	Temp.	Date	Temp.	Date	
Bet Dagan	35.1	30/7/20	19.2	3/7/20	39.8	25/7/18	14.1	20/7/65	1962-2020
Negba	35.3	30/7/20	18.6	3/7/20	40.5	25/7/18	15.0	20/7/65 13/7/84	1950-2020
Zefat Har Kenaan	35.0	30/7/20	16.4	18/7/20	39.0	30/7/00 23/7/56	12.2	2/7/52	1939-2020
Jerusalem ¹	36.0	26/7/20	16.3	1/7/20	40.8	30/7/00	11.8	1/7/34	1935-2020
Be'er Sheva ²	38.1	30/7/20	17.2	2/7/20	42.0	11/7/24 10/7/45	12.0	8/7/23 14/7/33	1922-2020
Elat	44.2	29/7/20 30/7/20	25.9	1/7/20	48.3	31/7/02	20.0	12/7/84 3/7/73	1949-2020

¹ For Jerusalem: Giv'at Ram 2019; Center 1950-2018; Talbiye 1948-1949; Palace Hotel 1935-1947.

² For Be'er Sheva: Negev Institute 1957-2019; Old Town 1922-1957.

Figure 1: Daily minimum and maximum temperatures in Jerusalem in July 2020 compared with the long-term average

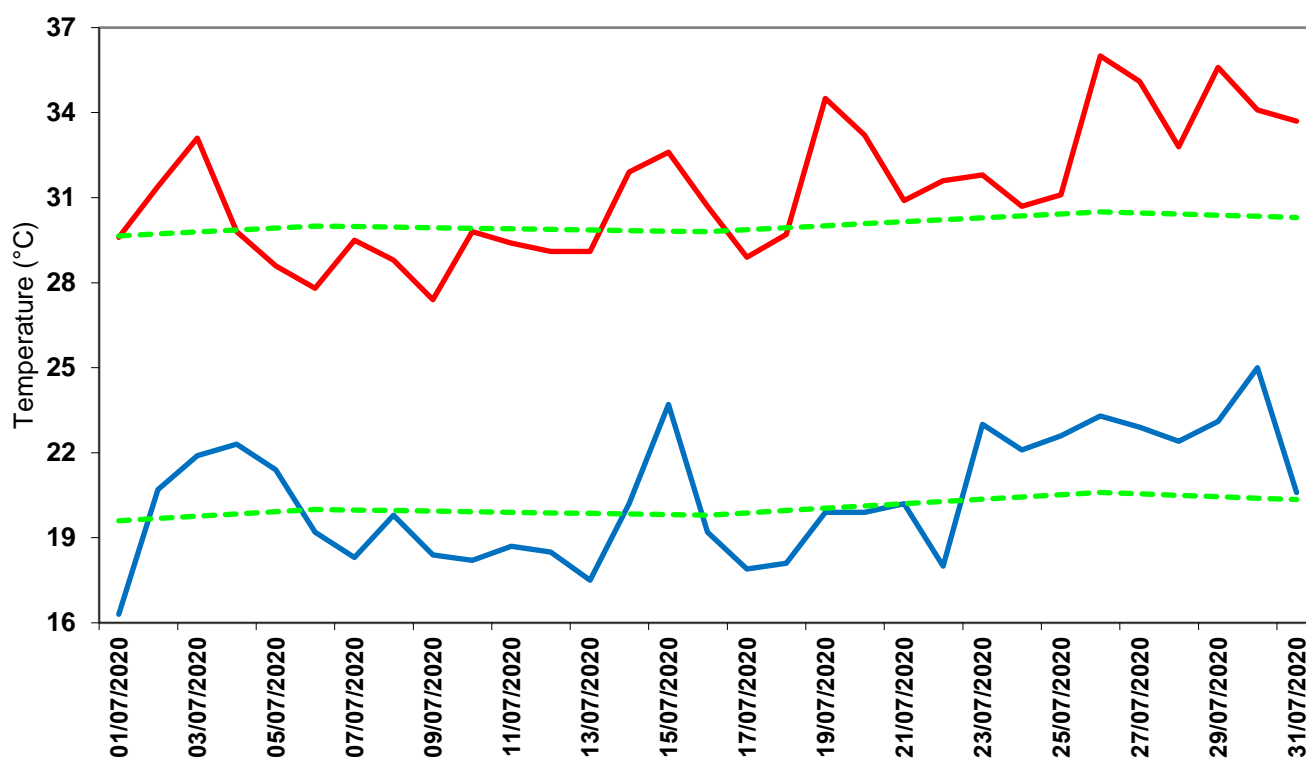


Figure 2: Daily minimum and maximum temperatures in Bet Dagan in July 2020 compared with the long-term average

