

July 1, 2020

A monthly weather review – June 2020

General

June was cooler than average in the north of the country and the Central Mountains and close to the average in the Coastal Plain and in the south of the country. During the month, there were several Sharav days alongside relatively cool days, but no extreme temperatures were measured. There were several occasions of light rain, and on the 19th, there were even measurable amounts of rain in the north of the country. A comparison of the first half of 2020 (January to June) to the corresponding period in the past, shows that although the half was slightly warmer than average, there were quite a few years in the past in which the first part was warmer, including the last seven years.

Temperatures and weather during the month

Temperatures during June were lower than average (1995 – 2009) in the north of the country and in the Central Mountains by 0.5 to 1.5 degrees. In the Coastal Plain and the south of the country, they were close to average.

The longest sequence of warmer than normal days was between the 5th and the 10th of June and it was particularly evident in the mountains and in the internal parts of the country. Other than that, there were no more than two consecutive days of warmer than usual weather. Several noticeable warm days occurred on the 13th, 17th and 21st, when the temperatures reached 33 to 35 degrees in the Coastal Plain and the Shfela, 37 to 38 degrees in the Northern Negev and the Northern Valleys and 41 to 44 degrees in the Jordan Valley and the Arava.

There were several relatively cool days during the month, such as the 3rd, 15th and the 19-20th, when the maximum temperatures measured in the mountains were 23 to 24 degrees. Relatively low minimum temperatures were measured on June 1st: 11 to 13 degrees in the mountains and the Negev, 13 to 15 degrees in the Shfela and the Northern Valleys and 15 to 16 degrees in the Coastal Plain.

On several days, there were reports of drizzle or light rain in a few regions in the country, and on the 19th there were even several millimeters of rain, measured in the north of the country, especially in the Upper Galilea.

The first half of 2020 in comparison with the past

In the first half of 2020, several months were cooler than the average (January, April and June), some were warmer than average (March and May) and during February temperatures were close to the average. Altogether, the period of January to June was slightly warmer than the long-term average for this period, but when compared to the past (from the beginning of the 1950's till today), there was a considerable number of years, in which first half of the year was warmer than that of 2020, including the first halves of the last 7 years.

Table 1: June 2020 temperatures¹ (°C) compared with the average

Region	Station	June 2020		Deviation from the average 1995-2009	
		Maximum	Minimum	Maximum	Minimum
Coastal Plain and the Shfela	Haifa (Technion)	26.9	19.7	0.0	-0.6
	En HaHoresh	28.7	17.3	-0.5	+0.4
	Bet Dagan	29.6	19.8	0.0	+0.2
	Negba	30.1	18.6	+0.1	0.0
Northern mountains	Elon (western Galilee)	28.3	18.2	-0.6	-0.7
	Merom Golan Picman	26.7	13.9	-1.0	+0.1
	Avne Etan	30.3	16.3	-1.5	-0.3
	Zefat Har Kenaan	27.6	16.5	-1.4	-1.4
	Tavor	31.8	18.5	-0.6	-1.0
Northern valleys	Afula, Nir HaEmeq	32.1	17.3	-0.2	-0.8
	Kefar Blum	33.6	17.1	-0.2	-1.0
	Zemah	35.2	19.8	-0.8	-0.7
	Eden Farm (Bet Shean)	35.0	20.1	-0.7	-0.7
Central mountains	Karne Shomron	29.3	18.5	+0.2	+0.4
	Jerusalem	28.1	17.2	-0.3	-1.0
	Bet Jimal	30.8	18.6	-0.3	-0.4
	Rosh Zurim	26.6	15.4	-0.1	-1.3
Negev	Besor	30.2	18.3	-0.6	0.0
	Arad	32.0	16.8	0.0	-0.2
	Be'er Sheva	32.7	18.9	-0.4	-0.1
	Sede Boqer	31.6	16.5	0.0	-0.2
Arava	Sedom	38.6	28.1	+0.3	-0.3
	Elat	39.2	25.5	+0.3	+0.3

¹ Due to installment of new temperature sensors, maximum temperatures might be higher by several tenths of °C when compared with readings of older sensors. This is currently being investigated.

Table 2: Extreme temperatures in June 2020 (°C) compared with the past

Station	June 2020				Extreme Values in record				Period of measurements
	Extreme Max.		Extreme Min.		Extreme Max.		Extreme Max.		
	Temp.	Date	Temp.	Date	Temp.	Date	Temp.	Date	
Bet Dagan	34.2	13/6/20 17/6/20	15.8	1/6/20	43.7	8/6/02	11.5	1/6/67	1962-2020
Negba	35.7	17/6/20	14.5	1/6/20	43.2	16/6/18	11.5	1/6/67	1950-2020
Zefat Har Kenaan	32.6	6/6/20	11.5	4/6/20	40.0	22/6/42	8.7	4/6/90	1939-2020
Jerusalem ¹	32.2	7/6/20	13.2	1/6/20	42.0	21/6/42	9.0	2/6/43	1935-2020
Be'er Sheva ²	37.5	17/6/20	14.5	1/6/20	46.0	13/6/33	8.0	3/6/28	1922-2020
Elat	44.4	22/6/20	21.1	1/6/20	47.9	28/6/14	18.5	11/6/58	1949-2020

¹ For Jerusalem: Giv'at Ram 2019; Center 1950-2018; Talbiye 1948-1949; Palace Hotel 1935-1947.

² For Be'er Sheva: Negev Institute 1957-2019; Old Town 1922-1957.

Figure 1: Daily minimum and maximum temperatures in Jerusalem in June 2020 compared with the long-term average

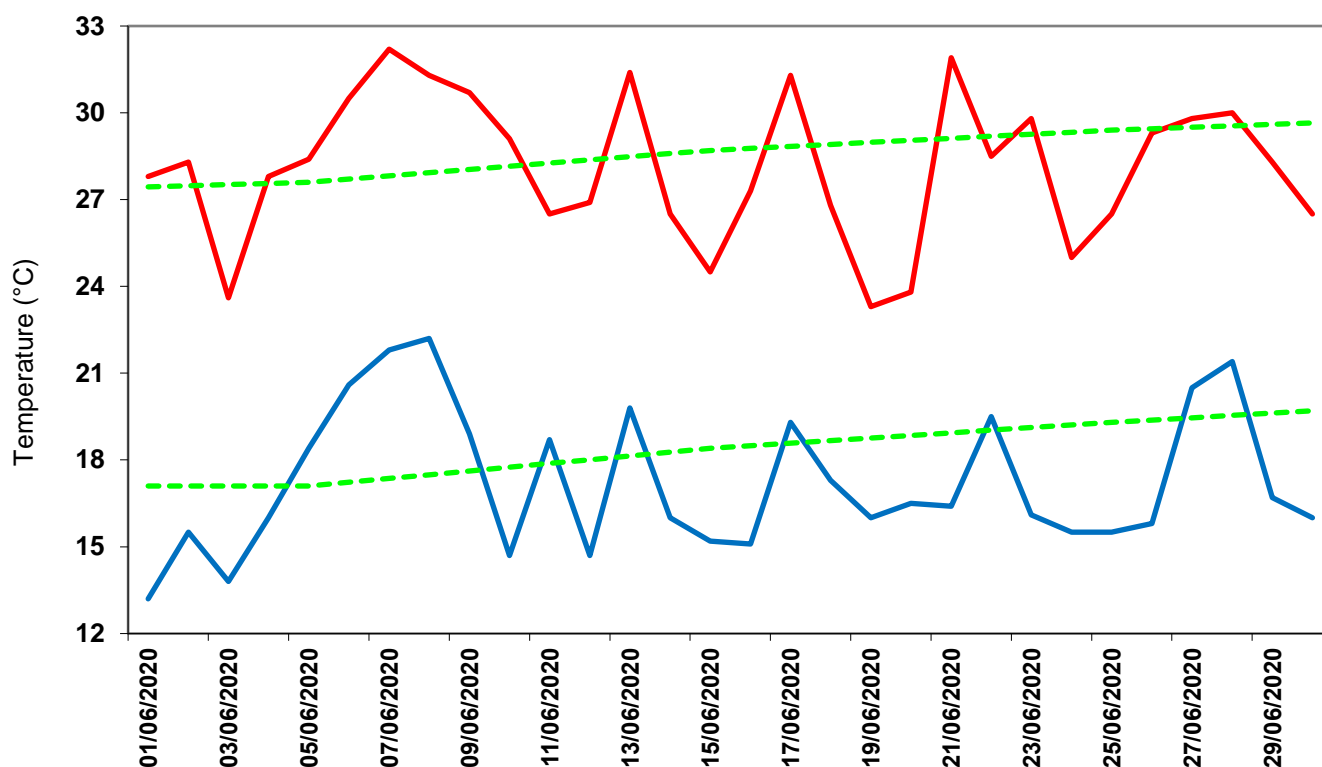


Figure 2: Daily minimum and maximum temperatures in Bet Dagan in June 2020 compared with the long-term average

