

A monthly weather summary - June 2021

General

June was slightly cooler than average in most parts of the country. During most of the month, temperatures were close to average or below it. Some of the days, were even cooler than normal to a considerable extent, especially inland. In contrast the last week of the month was noticeably warmer than average.

A comparison of the first half of 2021 (January to June) to the corresponding period in the past, reveals that this half was warmer than average and ranks as sixth in the last 70 years.

Temperatures and weather during the month

In most parts of the country, temperatures in June were below average (1995-2009) by 0.5°C. In the northern mountains, they were 0.5 to 1.5°C below it.

During the month there were two main episodes that were cool (relative to June): One episode was between the 2nd and the 8th with temperatures about 3°C below the average in the mountains and inland. The daily maximum temperatures in the northern and central mountains reached 24 to 25°C on some days and the minimum temperatures 13 to 14°C. At the station in Zefat Har Kenaan, a minimum temperature of 10.8°C was measured on the 3rd, the lowest temperature measured in June at this station in the last 20 years.

A cooler episode, even more pronounced in terms of its duration, lasted from the 15th to 23rd with temperatures below average by 3 to 4 C in the mountains and inland and by 1 to 1.5°C in the Coastal Plain.

Jerusalem had a 6-day sequence with maximum temperatures below 26°C - a sequence that has not occurred at this station in June since 1984 (previously such sequences were received in June once every few years). On the 16th and 17th drops or light rain was reported in various places mainly in the northern and central Coastal Plain.

On the 24th, a noticeable trend of warming began and from then until the end of the month, temperatures above normal prevailed.

In the Negev and the northern valleys, 36 to 38°C were measured in the last days of the month, in the Hula Valley and the Sea of Galilee 38 to 40°C, in the Jordan Valley, in the Dead Sea and in the Arava 42 to 44°C, and in the mountains and Coastal Plain 33 to 34°C.

The first half of 2021 in compared to the past

Although June was slightly cooler than average, most months from the beginning of 2021 were warmer than average, some considerably (such as January and May), so the period from January to June was considerably warmer than average. The first half of 2021 is ranked as

sixth compared to the past (from the early 1950s to the present). The five years in which the first half was warmer were all in recent years (since 2010), the warmest being 2018 (Fig. 3).

Table 1: June 2021 temperatures ($^{\circ}\text{C}$) compared with the average

Region	Station	June 2021		Deviation from the average 1995-2009	
		Maximum	Minimum	Maximum	Minimum
Coastal Plain and the Shfela	Haifa (Technion)	27.1	19.9	+0.2	-0.4
	En HaHoresh	29.2	16.7	0.0	-0.2
	Bet Dagan	30.1	19.6	+0.5	0.0
	Negba	29.8	18.5	-0.2	-0.1
Northern mountains	Elon (western Galilee)	28.7	18.1	-0.2	-0.8
	Merom Golan Picman	27.2	14.6	-0.5	+0.8
	Avne Etan	30.7	15.8	-1.1	-0.8
	Zefat Har Kenaan	27.5	16.3	-1.5	-1.6
	Deir Hanna	29.4	20.2	-0.4	-0.2
Northern valleys	Afula, Nir HaEmeq	32.5	18.0	+0.2	-0.1
	Kefar Blum	33.5	17.9	-0.3	-0.2
	Zemah	35.8	20.2	-0.2	-0.3
	Eden Farm (Bet Shean)	35.4	20.3	-0.3	-0.5
Central mountains	Qarne Shomron	29.2	17.9	+0.1	-0.2
	Jerusalem	28.1	17.8	-0.3	-0.4
	Bet Jimal	30.9	19.0	-0.2	0.0
	Rosh Zurim	26.6	15.8	-0.1	-0.9
Negev	Besor	30.3	18.1	-0.5	-0.2
	Arad	31.7	16.6	-0.3	-0.4
	Be'er Sheva	32.8	18.5	-0.3	-0.5
	Sede Boqer	31.3	16.3	-0.3	-0.4
Arava	Sedom	37.8	28.3	-0.5	-0.1
	Elat	38.8	25.1	-0.1	-0.1

Table 2: Extreme temperatures in June 2021 (°C) compared with the past

Station	June 2021				Extreme Values in record				Period of measurements
	Extreme Max.		Extreme Min.		Extreme Max.		Extreme Min.		
	Temp.	Date	Temp.	Date	Temp.	Date	Temp.	Date	
Bet Dagan	34.1	30/6/21	16.7	3/6/21	43.7	8/6/02	11.5	1/6/67	1962-2021
Negba	34.7	29/6/21	14.7	5/6/21	43.2	16/6/18	11.5	1/6/67	1950-2021
Zefat Har Kenaan	33.0	30/6/21	10.8	3/6/21	40.0	22/6/42	8.7	4/6/90	1939-2021
Jerusalem ¹	32.9	29/6/21	13.7	5/6/21	42.0	21/6/42	9.0	2/6/43	1867-2021
Be'er Sheva ²	37.7	27/6/21 29/6/21	15.5	6/6/21	46.0	13/6/33	8.0	3/6/28	1922-2021
Elat	43.1	30/6/21	22.1	5/6/21	47.9	28/6/14	18.5	11/6/58	1949-2021

¹ For Jerusalem: Center 1950-2021; Talbiye 1948-1949; Palace Hotel 1935-1947, American Colony 1927-1935, Mt. of Olives 1918-1926, German Colony 1895-1915, English Hospital Nevi'im St 1898-1913, English Hospital Old City 1867-1915

² For Be'er Sheva: Negev Institute 1957-2021; Old Town 1922-1957.

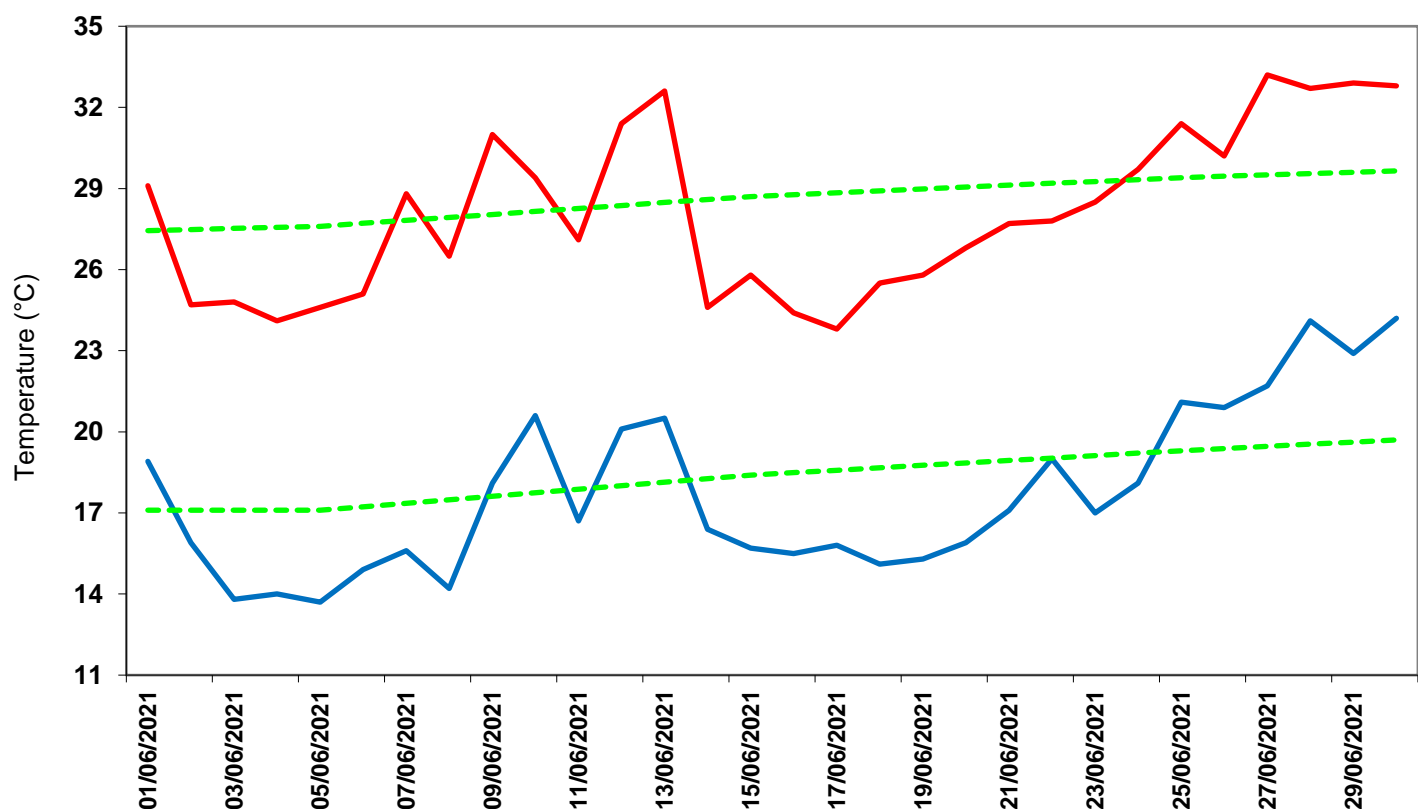


Figure1: Daily minimum and maximum temperatures in Jerusalem in June 2021 compared with the long-term average

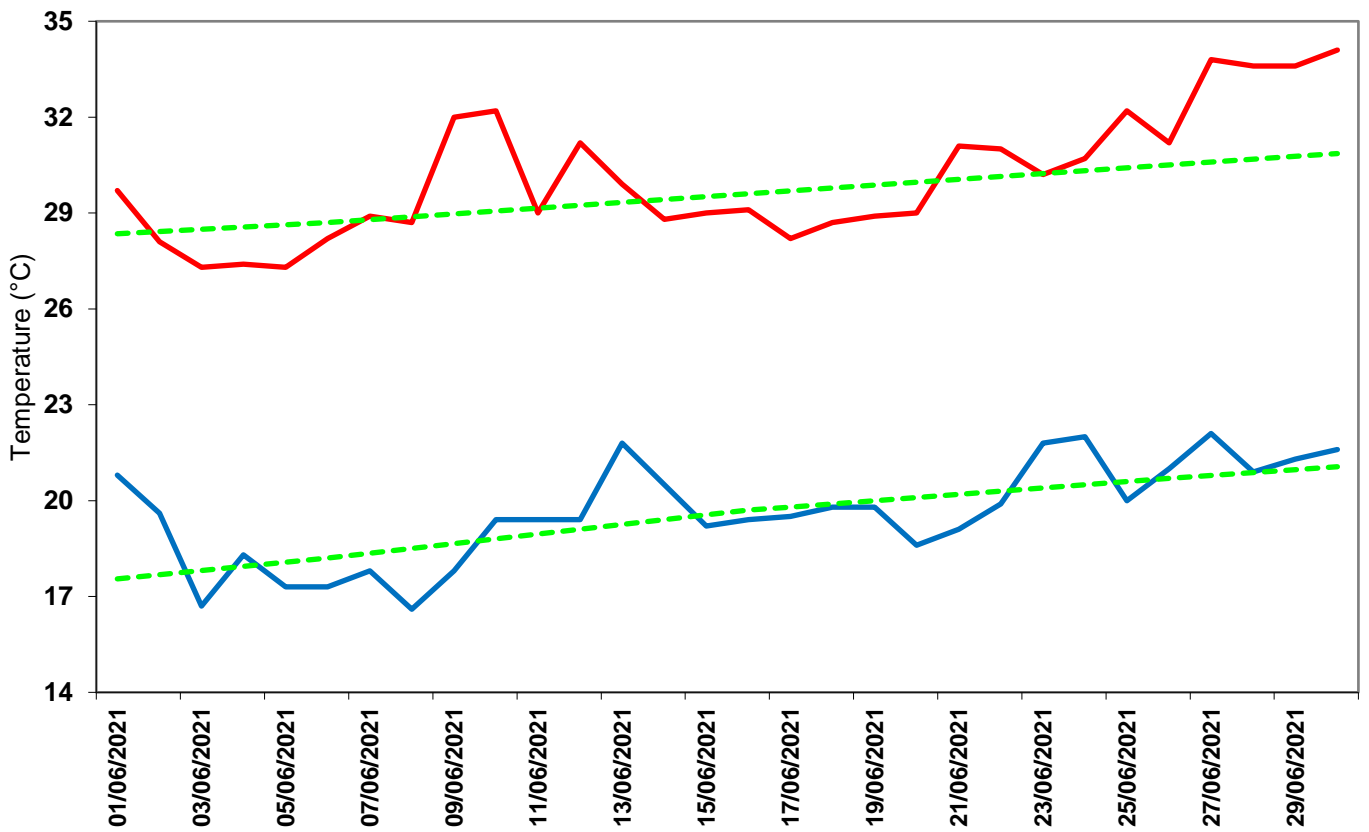


Figure2: Daily minimum and maximum temperatures in Bet Dagan in June 2021 compared with the long-term average

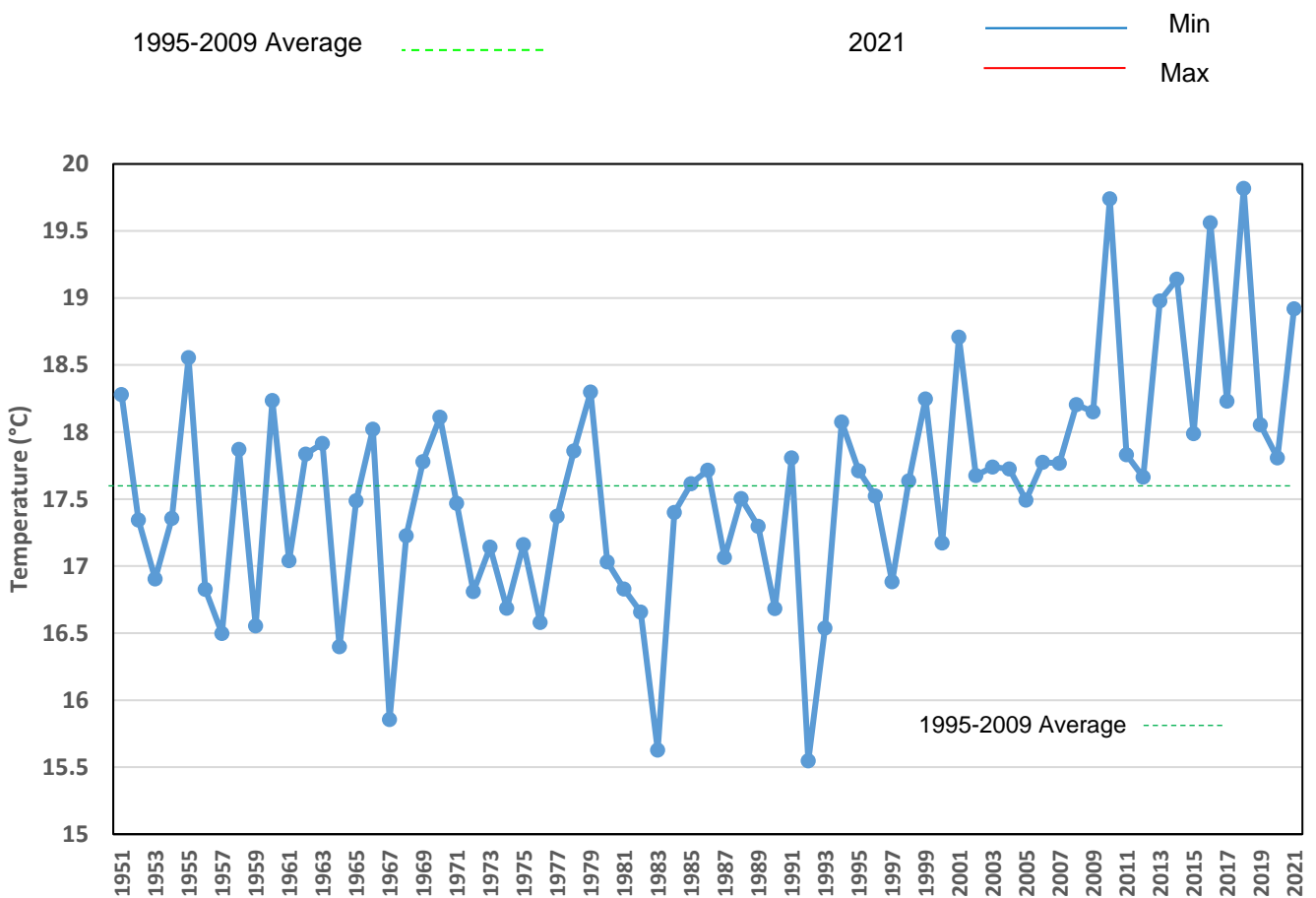


Figure3: Israel average daily temperature (°C) * in the first half of each year 1951-2020

* The value is based on the average of five stations : Zefat Har Kenaan, Jerusalem Centre, Beit Jimal, Negba and Elat. Preliminary tests revealed that the average of these stations can, to a good approximation, represent the entire area of Israel.