

01 June 2026

Monthly Weather Summary – May 2026

General

May was considerably colder than average, and on a nationwide basis it was the coldest May since 2008. The cold was especially pronounced in the north of the country, where daytime temperatures during May ran 3 to 4 °C below average; in historical terms this was the coolest May in that region since 1993.

The months of April and March had likewise been below average, so that spring 2026 was unusually cold. In historical terms this was the coldest spring nationwide since spring 2000, and in the interior of the country since 1997.

Rainfall in May was relatively high for the month in the north of the country, where 20 to 40 mm was recorded in parts of the region. In the centre and the south, by contrast, little rain fell, if any. Most of the rain was received during an event at the start of the month (4–5 May), which had unusually wintry characteristics for the season, with low temperatures and strong winds. A further rain event occurred late in the month (20–21 May), but the amounts in it were smaller.

This brings the 2025/26 rainfall season to a close. In the nationwide spatial average, seasonal totals were close to the multi-year average, although differences were evident between the various parts of the country. In the north and the centre, seasonal totals were generally slightly below average; there were several wetter-than-average pockets, but across most of the region the totals were below or close to average. On the Golan Heights, in the Galilee and in the Hula Valley the totals reached about 90% of average, on the central Coastal Plain about 80%, and in the Gush Dan area as little as about 70%. In the south, by contrast, the season was considerably wetter than average, and in parts of the region the totals amounted to 1.5 to 2 times the average — making the 2025/26 season one of the wettest since measurements began in that region. The season featured extreme and exceptional weather events: extreme rainfall intensities (national record intensities in September, rare intensities and peak discharges at Nahal Tze'elim, and more), numerous flood events in the south of the country, and dust-haze events at an unusually high frequency.

As regards the temperature regime in May, the first part of the month was colder than average, at times markedly so, but the middle of the month was warmer, and on some days brief Sharav (khamsin) episodes prevailed. In the latter part of the month it again turned cool, and a run of 12 consecutive colder-than-average days set in.

Rainfall in May 2026

In May, rain fell mainly in the north of the country. On the northern Coastal Plain (from Haifa northwards), on the Carmel, in the Galilee, on the Golan and in the northern Hula Valley, 5 to 15 mm was recorded — amounts close to the region's multi-year average. In parts of the northern Golan and the Upper Galilee the amounts were larger, reaching 20 to 30 mm and more: Majdal Shams totaled 40 mm, Hurfeish 33 mm, Beit Jann 32 mm and Matat 31 mm.

In the more southerly areas, rainfall amounts were smaller. From the Hadera–Pardes Hanna area to the Jezreel Valley and the southern Hula Valley, 2 to 5 mm was received, while in the remaining parts of the country the rainfall did not exceed 1 mm (although about 10 mm was observed in the Netanya area). Data for several stations appear in Table 1.

Most of the rain fell during a wintry-type event at the start of the month (3–5 May). A deep low carrying cold air crossed our region, producing rain mainly in the north, together with strong winds and low temperatures. Frontal lines passed during the late-morning hours of 4 and 5 May, and even after they had passed, rain continued to fall intermittently in the north. In the Upper Galilee and on the Golan Heights, the event delivered 10 to 25 mm, and about 30 mm at several stations. On the northern Coastal Plain, in the Lower Galilee and in the northern Hula Valley, 5 to 10 mm was recorded, as was the case in the Netanya area. In the remaining areas the amounts were small. Full details appear in a separate review: [The Wintry Weather Event Summary of 4–5 May 2026](#)

A further rainfall spell occurred on 20–21 of the month, during which amounts of up to 3 mm were measured in the north and the centre. At several stations at the northern tip of the country, larger amounts were recorded: 11 mm at Misgav Am, and 10 mm at Majdal Shams and at Metula.

Table 1: Rainfall amounts in May 2026 compared with the multi-year average for the month*

Area	Station	Rainfall in May 2026 (mm)	Multi-year average for May (mm)*
Coastal plain and Lowlands	Rosh Haniqra	9	14
	Nahariyya	8	8
	Evron	12	8
	Shave Ziyyon	11	7
	Akko	8	6
	Afeq	6	6
	Haifa (Port)	7	6
	Haifa Technion	9	6
	Yagur	11	7
	En Hashofet	3	7
	Zichron Yaakov	2	6
	Amikam	2	5
	Gilad	3	6
	Regavim	2	6
	Gan Shemu'el	2	5
	En HaHoresh	2	4
	Kadima	1	5
	Kefar Hess	0	5
	Nir Eliyyahu	0	5
	Kefar Shmaryahu	0.1	3
	Hakfar Hayarok	0	3
	Nahshonim	0.2	5
	Tel Aviv Coast	2	2
	Bet Dagan	0.4	3
	Ben Gurion Airport	0.1	4
	Rishon Lezion	0	3
	Nezer Sereni	0.2	3
	Rehovot	0	2
	Nir Galim	0	3
	Qevuzat Yavne	0	3
	Be'er Toviyya	0	3
	Negba	0	4
Ashkelon	0	3	
Erez	0.2	3	
Yakhini	0	3	
Be'eri	0	2	
Magen	0.1	1	
Besor	0.2	1	
Northern Mountains	Nimrod Fortress	22	14
	El Rom	20	12
	Merom Golan Picman	15	11
	Gamla	3	8
	Kefar Giladi	17	10
	Elon	10	14
	Kabri	6	8
	Meron	27	11
	Zefat Har Kenaan	16	10
	Harashim	32	17
	Ashhar	12	11
	Deir Hana	9	10
	Yodfat	3	8
Lavi	3	6	

Table 1 (Cont.): Rainfall amounts in May 2026 compared with the multi-year average for the month*

Area	Station	Rainfall in May 2026 (mm)	Multi-year average for May (mm)*
Northern Mountains	Alon HaGalil	2	6
	Nazareth	4	7
	Tavor	2	8
	Gazit	1	6
Northern Valleys	Newe Ya'ar	2	7
	Afula Nir HaEmek	0.3	4
	Nir David	1	4
	Banias	12	10
	Dafna	10	8
	Kefar Blum	3	7
	Ayelet HaShahar	6	7
	Kefar Nahum	1	6
	Ginosar	2	7
	Zemah	0.3	5
Sede Eliyyahu	1	5	
Central Mountains	Ma'ale Gilboa	1	6
	Kedumim	2	7
	Har Berakha	3	8
	Qarne Shomron	4	7
	Itamar	2	5
	Ariel	0.5	6
	Newe Zuf	0.1	6
	Eli	0.7	6
	Shilo	1	5
	Har Harasha	0.2	9
	Psagot	0.1	7
	Nahshon	0	6
	Zova	0	6
	Jerusalem Center	0.1	7
	Ma'ale Adummim	0	3
	Beit Jamal	0.7	7
	Zur Hadassa	0.7	7
	Netiv HaLamed-Heh	1	6
Rosh Zurim	1	7	
Negev and the Arava	Lahav	0	4
	Dorot	0	3
	Beit Kama	0	3
	Arad	0	3
	Beer Sheva	0	4
	Negev Junction	0.3	4
	Sede Boqer	0.1	1
	Mizpe Ramon	0	1
Jordan Valley	Neot Smadar	0	1
	Gilgal	0.1	1
	Beit HaArava	0	1
	Sedom	0	1
	Hazeva	0	1
	Paran	0	1
	Yotvata	0	1
	Timna	0	1
Eilat	0	1	

* The multi-year average refers to the years 1991 to 2020. At stations that did not operate throughout this entire period, the averages are adjusted to these years.

Rainfall amount since the beginning of the season

With the end of May, the 2025/26 rainy season can be summarized as wetter than average in southern Israel, while in central and northern Israel rainfall amounts were close to average or below it. Thus, on a national spatial average, rainfall amounts were close to the average.

In most parts of the Golan Heights, the Galilee, the Hula Valley and the northern Sea of Galilee, rainfall amounts reached 85% to 95% of the multi-year average, and at several points in the Galilee they reached only 75% to 85% of the average. By contrast, in the northern and southern Golan Heights the amounts were close to average and locally even above it (at Majdal Shams, 1,131 mm were recorded, which is 103% of the average). In the Jezreel Valley, rainfall amounts were close to average, and in the area from Nahariyya to Haifa, where the season began with an exceptional event in September, 2025/26 was wetter than average, with amounts of 105% to 115%. In the southern Sea of Galilee and the northern Jordan Valley, rainfall amounts also exceeded the average, as they did in the Pardes Hanna-Hadera area.

South of these areas, rainfall amounts were below average - 90% to 95% of the average in northern Samaria, and in the coastal plain from the Netanya line to the Ashdod line the rainfall deficit was more pronounced, with amounts of 70% to 90% of the average. In parts of the Gush Dan area, less than 70% of the average was recorded (Maps 1 and 2, and Table 2).

In the northern Judean Mountains and the Jerusalem area, rainfall amounts were close to average. From the Ashdod-Jerusalem line southward, rainfall amounts were above average, and in the southern parts they were considerably above average. In the area from the Hebron Hills and Beit Guvrin to the Gaza border area and the western Negev, the amounts reached 115% to 130% of the average. In the northeastern Negev, the southern Negev, the Dead Sea area and the Arava, rainfall amounts were more than 1.5 times the average and in some places even more than twice the average, making the 2025/26 season exceptional in these areas. At several stations the current season ranks fourth or even higher compared with the past. In Beer Sheva, for example, where rainfall measurements have existed for more than 100 years, there were only 3 other cases in which the rainy season was wetter than the current one; the last time this occurred was in the 1971/72 season (Figure 1).

The rainy season was characterized by numerous rain events. From its beginning on 24 September 2025 until 21 May 2026, there were 34 rain events, most of which were short (one to two days), although there were several longer events, the most notable of which lasted 6 days - Storm Byron in December and a prolonged event in late February. As a result, the number of rainy days was greater than average (details below). During the season there were many flood events in eastern and southern Israel, with peak discharges in wadis. The rainy season was also characterized by numerous haze days; unusually, most of them occurred during the winter months rather than in spring.

Map 1 (right) shows the total amount in mm; Map 2 (left) shows the amount compared with the multi-year average for the entire season (%).

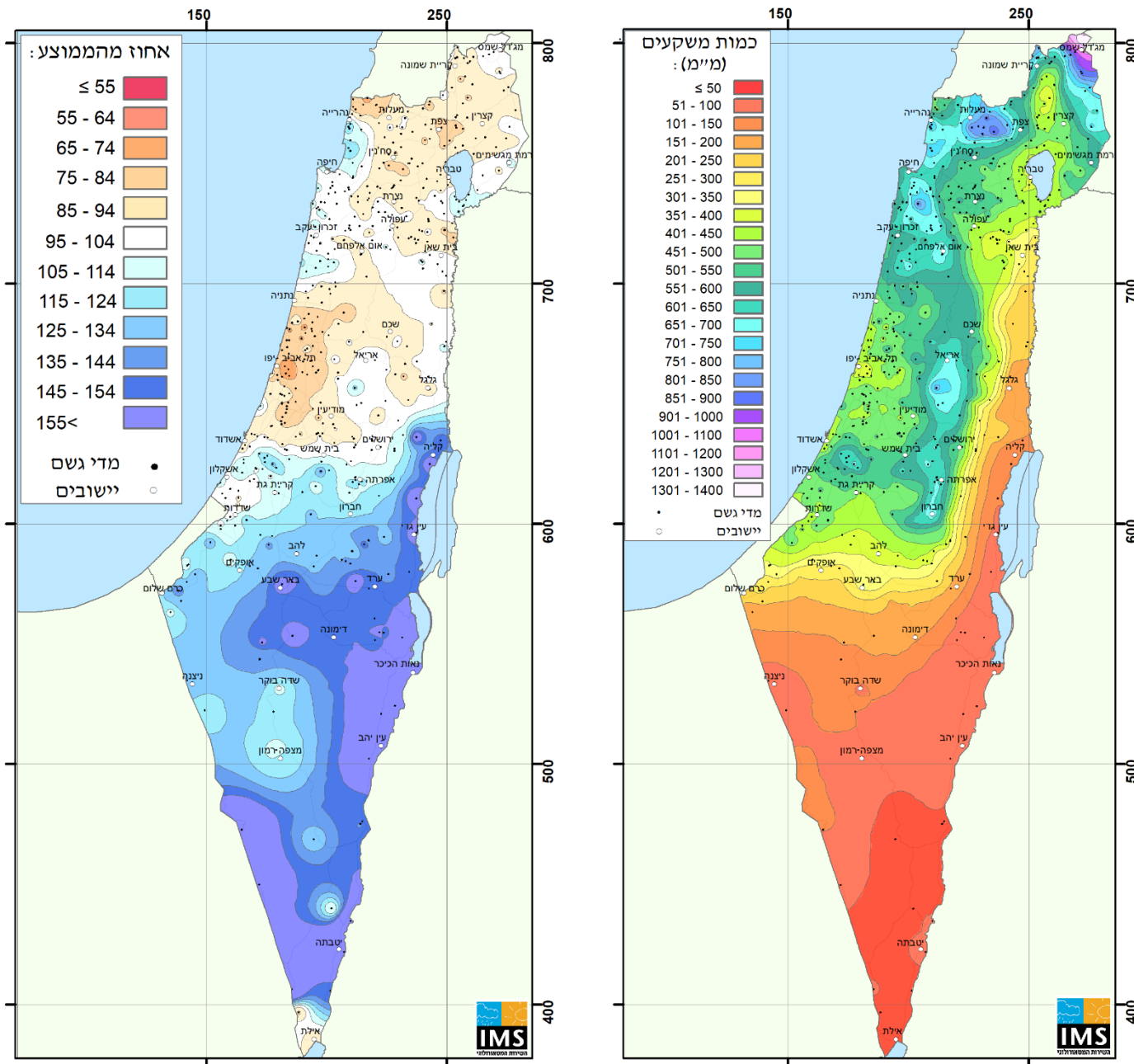


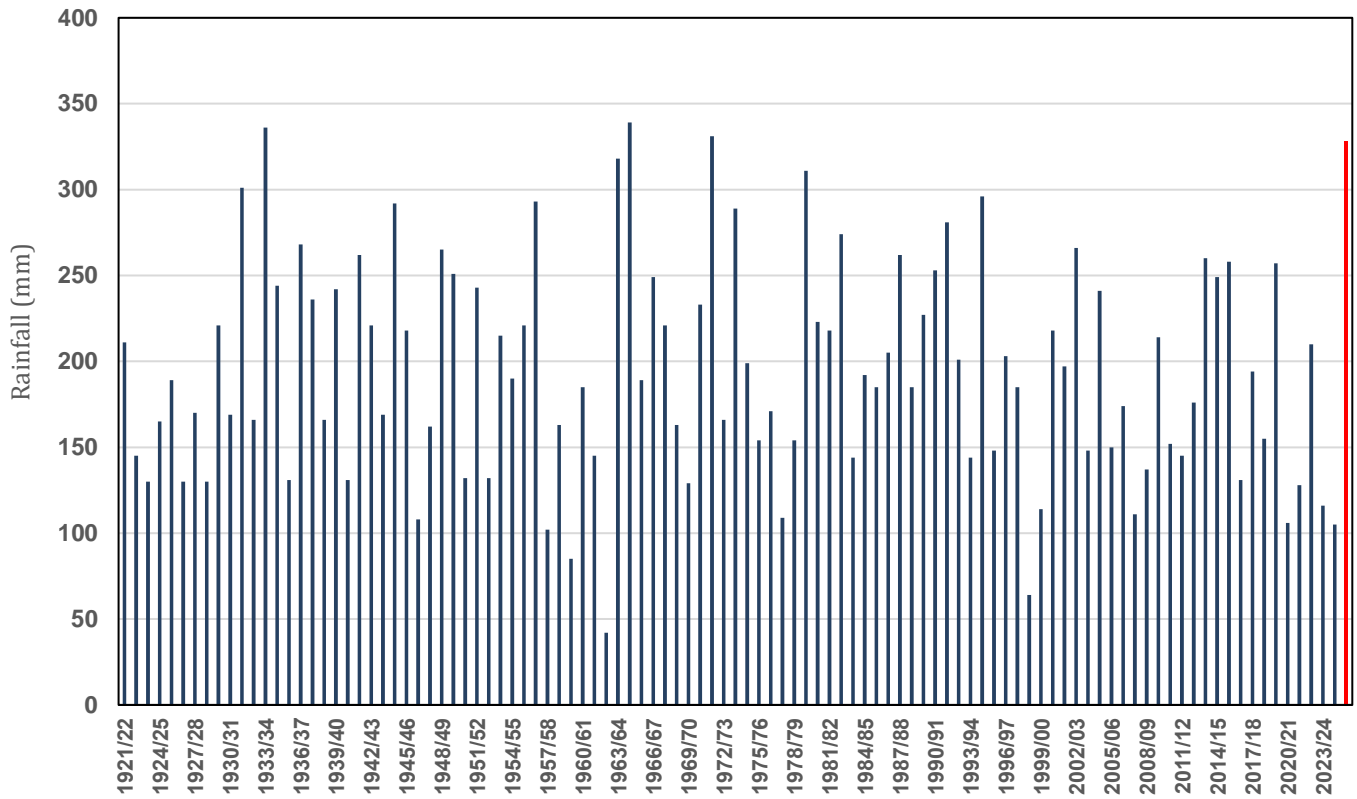
Table 2: Rainfall amounts from the beginning of the season to the end of May compared with the average*

Station	Cumulative amount from beginning of season to end of May (mm)	Multi-year average* for the entire season (mm)	% of average for the entire season
Rosh Haniqra	473	613	77%
Nahariyya	620	615	101%
Evron	761	626	122%
Shave Ziyyon	700	604	116%
Akko	667	586	114%
Afeq	662	569	116%
Haifa (Port)	609	566	108%
Haifa Technion	685	671	102%
Yagur	669	709	94%
En Hashofet	632	661	96%
Zichron Yaakov	556	574	97%
Amikam	592	635	93%
Gilad	614	654	94%
Regavim	618	628	98%
Gan Shemu'el	646	560	115%
En HaHoresh	548	576	95%
Kadima	498	618	81%
Kefar Hess	489	615	80%
Nir Eliyyahu	486	614	79%
Kefar Shmaryahu	409	534	77%
Hakfar Hayarok	494	557	89%
Nahshonim	464	553	84%
Tel Aviv Coast	416	443	94%
Bet Dagan	457	541	85%
Ben Gurion Airport	400	541	74%
Rishon Lezion	477	511	93%
Nezer Sereni	523	581	90%
Rehovot	430	536	80%
Nir Galim	456	504	90%
Qevuzat Yavne	511	526	97%
Be'er Toviyya	632	538	117%
Negba	497	500	99%
Ashkelon	494	455	108%
Erez	459	443	104%
Yakhini	494	451	110%
Be'eri	472	359	131%
Magen	340	255	133%
Besor	288	215	133%
Nimrod Fortress	850	816	104%
El Rom	880	901	98%
Merom Golan Picman	741	811	91%
Gamla	534	578	92%
Kefar Giladi	694	757	92%
Elon	646	805	80%
Kabri	545	666	82%
Meron	762	881	86%
Zefat Har Kenaan	553	688	80%
Harashim	838	988	85%
Ashhar	532	635	84%
Deir Hana	512	616	83%
Yodfat	522	668	78%

Table 2 (Cont.): Rainfall amounts from the beginning of the season to the end of May compared with the average*

Station	Cumulative amount from beginning of season to end of May (mm)	Multi-year average* for the entire season (mm)	% of average for the entire season
Lavi	449	509	88%
Alon HaGalil	524	593	88%
Nazareth	548	591	93%
Tavor	513	527	97%
Gazit	448	472	95%
Newe Ya'ar	540	584	92%
Afula Nir HaEmek	448	450	99%
Nir David	374	388	97%
Banias	734	690	106%
Dafna	558	615	91%
Kefar Blum	427	507	84%
Ayelet HaShahar	433	473	92%
Kefar Nahum	419	443	94%
Ginosar	405	447	91%
Zemah	415	384	108%
Sede Eliyyahu	282	278	101%
Ma'ale Gilboa	427	402	106%
Kedumim	576	642	90%
Har Berakha	553	627	88%
Qarne Shomron	532	589	90%
Itamar	608	636	96%
Ariel	647	556	116%
Newe Zuf	770	648	119%
Eli	605	593	102%
Shilo	493	522	94%
Har Harasha	657	668	98%
Psagot	610	694	88%
Nahshon	502	539	93%
Zova	674	656	103%
Jerusalem Center	508	522	97%
Ma'ale Adummim	313	276	113%
Beit Jamal	566	506	112%
Zur Hadassa	678	636	107%
Netiv HaLamed-Heh	654	452	145%
Rosh Zurim	595	558	107%
Lahav	376	301	125%
Dorot	487	394	123%
Beit Kama	382	310	123%
Arad	195	135	145%
Beer Sheva	328	197	166%
Negev Junction	192	116	165%
Sede Boqer	97	87	111%
Mizpe Ramon	82	70	117%
Neot Smadar	32	30	104%
Gilgal	157	171	91%
Beit HaArava	144	94	152%
Sedom	86	39	221%
Hazeva	66	39	168%
Paran	47	34	141%
Yotvata	64	27	240%
Timna (Ramon Airport)	34	25	138%
Eilat	19	22	86%

Figure 1: Seasonal rainfall total at Beer Sheva, 1921/22 to 2025/26



Number of Rain Days

As expected, May saw a relatively large number of rain days (using a threshold of 1 mm or more) in the north of the country, with the northern Golan and the Galilee standing out at 3 to 5 rain days, compared with an average of 2 days. Other parts of the north had 1 to 2 days, while in the remaining parts of the country there were no days with 1 mm or more (Table 3).

The number of rain days for the season as a whole was above average in the north and also in the northern Negev. In the Galilee and on the Golan there were 60 to 65 rain days, compared with an average of about 55 days, despite seasonal totals having been slightly below average. In the south, too, the number of rain days exceeded the average considerably: Beer Sheva had 33 rain days compared with an average of 26, and Sedom recorded 19 rain days compared with an average of 9. In the centre of the country, the number of days was close to average.

Table 3: Number of rain days* in May 2026 and since the start of the season, compared with the average**

	No. of days in May 2026	May average**	No. of days since beginning of season	Average since beginning of season**
Nahariyya	2	1	55	52
En HaHoresh	1	1	52	46
Hakfar Hayarok	0	0.5	41	45
Bet Dagan	0	0.7	41	42
Negba	0	0.5	36	37
Be'eri	0	0.4	35	33
Kefar Giladi	5	2	65	55
Merom Golan	3	2	60	54
Zefat Har Kenaan	2	2	61	54
Afula Nir HaEmek	0	1	48	44
Jerusalem Center	0	1	39	41
Beit Jamal	0	1	42	38
Rosh Zurim	0	1	41	42
Dorot	0	0.4	33	34
Beer Sheva	0	0.5	33	26
Kefar Blum	1	1	53	49
Ayelet HaShahar	2	1	57	46
Zemah	0	1	48	41
Sede Eliyyahu	0	1	41	35
Sedom	0	0.2	19	9
Eilat	0	0.2	3	4

* Threshold of 1 mm

** Average for 1991 to 2020

Temperatures and Weather During the Month

May was considerably colder than average (1991–2020). This was especially pronounced in the north of the country, where daytime temperatures were 3 to 4 °C below average. In the Central Mountains, daytime temperatures were 2.5 to 3 °C below average; in the Negev 2 to 2.5 °C; and on the Coastal Plain, in the Lowlands and in the Arava 1.5 to 2.5 °C below average. Night-time temperatures were also below average, but by a smaller margin: in the north and the Central Mountains 1 to 2 °C below average, in the Negev about 1 °C, and on the Coastal Plain and in the Lowlands 0.5 to 1 °C below average (Table 4).

In terms of temperature, May can be divided into three parts: the first part was colder than usual, the middle part was warmer than usual and included several Sharav (khamsin) days, and the final part was again cooler than average (Figures 2 and 3).

1–8 May — Colder than average, at times considerably so

The first part of May was colder than usual, and this was especially pronounced on 4–7 of the month, following the passage of a wintry-type system that produced rain and low temperatures. In the Northern Mountains and the Northern Valleys, minimum temperatures of 6 to 7 °C were recorded, and 8 to 9 °C in the Central Mountains. Maximum temperatures in the Northern Mountains were 12 to 14 °C (and even below 10 °C on the northern Golan), 14 to 15 °C in the Central Mountains, and 20 to 22 °C on the Coastal Plain, in the Lowlands, in the Northern Valleys and in the Negev. Maximum temperatures in the mountains were 7 to 9 °C below average and minimum temperatures 4 to 6 °C below average; in the lower-lying areas, maximum temperatures were 4 to 5 °C below average.

9–18 May — Warmer than usual, with Sharav (khamsin) episodes

The middle part of May was warmer. During this period there were brief Sharav (khamsin) episodes interspersed with relatively cool days, producing sharp day-to-day temperature changes. On 12 May a Sharav prevailed, with temperatures of 34 to 35 °C on the Coastal Plain and in the Northern Valleys, 36 to 39 °C in the Lowlands, the northern Negev, the Jordan Valley and the Arava, and 30 to 32 °C in the mountains. The following day brought considerable cooling, but the day after that, on 14 May, a Sharav again prevailed, with temperatures of 34 to 36 °C on the Coastal Plain, in the Lowlands, the northern Negev and the Northern Valleys, 36 to 38 °C in the Jordan Valley, 38 to 40 °C in the Arava, and 30 to 32 °C in the mountains.

The following two days were cooler than average, and on 17 May there was a further Sharav day, with temperatures similar to those of the previous Sharav day. On 18 May, cooling set in along the coastal strip, but in the interior a Sharav still prevailed, with temperatures of 34 to 36 °C on the Coastal Plain, in the Lowlands, the northern Negev and the Northern Valleys, and 39 to 42 °C in the Jordan Valley and the Arava.

19–31 May — Cooler than usual

On 19 May, considerable cooling occurred across most of the country (except the Arava, where a Sharav still prevailed, with temperatures of 40 to 42 °C). Until the end of the month, temperatures were below normal. In the mountains and the interior they were 2 to 4 °C below average by day and by night, and on the Coastal Plain daytime temperatures were 1 to 3 °C below average, while the nights were slightly warmer than average or close to it, and only on 23–25 of the month were they colder than average.

On 31 May, warming occurred and temperatures returned to close to average, bringing to an end a run of 12 colder-than-average days.

Table 4: Temperatures in May 2026 (°C) compared with the average

	Station	May 2026		Difference from 1991-2020 average	
		Maximum	Minimum	Maximum	Minimum
Coastal plain and Lowlands	Haifa Technion	23.9	16.5	-2.9	-1.2
	En HaHoresh	25.8	13.5	-2.2	-0.1
	Bet Dagan	26.9	16.6	-1.8	-0.3
	Negba	27.1	14.8	-1.7	-0.8
Northern Mountains	Elon	25.1	15.1	-3.3	-1.4
	Merom Golan Picman	22.3	9.5	-4.3	-0.8
	Avne Eitan	26.7	13.1	-3.1	-1.4
	Zefat Har Kenaan	22.4	12.9	-4.2	-2.4
	Deir Hana	26.3	16.4	-2.9	-1.8
	Tavor (Kadoorie)	28.5	14.7	-3.1	-1.7
Northern Valleys	Afula, Nir HaEmek	28.2	14.2	-3.2	-0.8
	Kefar Blum	29.3	13.9	-3.7	-1.0
	Zemah	31.0	16.0	-3.0	-1.3
	Eden Farm (Bet She'an)	30.7	16.7	-3.4	-1.2
Central Mountains	Qarne Shomron	25.9	15.1	-2.6	-1.0
	Jerusalem	24.9	14.5	-2.9	-1.9
	Beit Jamal	27.2	15.6	-2.5	-1.4
	Rosh Zurim	22.6	12.4	-3.0	-2.1
Negev	Besor	27.3	14.9	-2.0	-0.8
	Arad	28.0	14.1	-2.3	-1.2
	Beer Sheva	29.2	15.7	-2.2	-1.2
	Sede Boqer	27.6	13.4	-2.1	-1.2
The Arava	Sedom	35.0	24.5	-1.4	-1.3
	Hazeva	34.1	20.1	-1.5	-1.0
	Yotvata	33.9	18.9	-1.2	-1.1
	Eilat	34.8	22.0	-2.9	-1.2

Table 5: Extreme temperatures in May 2026 (°C) compared with the past

	May 2026				Extreme values since measurements began				Station operating years
	Extreme Maximum		Extreme Minimum		Extreme Maximum		Extreme Minimum		
	Temp.	Date	Temp.	Date	Temp.	Date	Temp.	Date	
Bet Dagan	34.7	17/5/26	10.8	7/5/26	45.6	21/05/1970	5.6	01/05/1963	1962-2026
Negba	36.8	12/5/26	8.8	2/5/26	46.5	21/05/1970	6.0	07/05/1965	1950-2026
Zefat Har Kenaan	28.8	12/5/26	6.4	6/5/26	38.1	23/05/1995	5.7	07/05/1965	1867-2026
Jerusalem*	32.6	12/5/26	9.2	5/5/26	39.6	11/05/1941	7.6	03/05/1990	1935-2026
Beer Sheva**	37.5	12/5/26	10.4	7/5/26	44.8	21/05/1970	4.5	02/05/1932	1922-2026
Eilat	41.2	19/5/26	16.5	6/5/26	46.0	15/05/2016	12.1	13/05/2006	1949-2026

* Jerusalem: Center 1950-2026, Talbiya 1948-1949, Palace Hotel 1935-1947, American Colony 1927-1935, Mount of Olives 1918-1926, German Colony 1895-1915, English Hospital on Hanevi'im Street 1898-1913, English Hospital in the Old City 1867-1915.

** Beer Sheva University 2026, Beer Sheva Negev Institute 1957-2026, Beer Sheva 1922-1957.

Figure 2: Daily minimum and maximum temperature in Jerusalem in May 2026 compared with the multi-year average

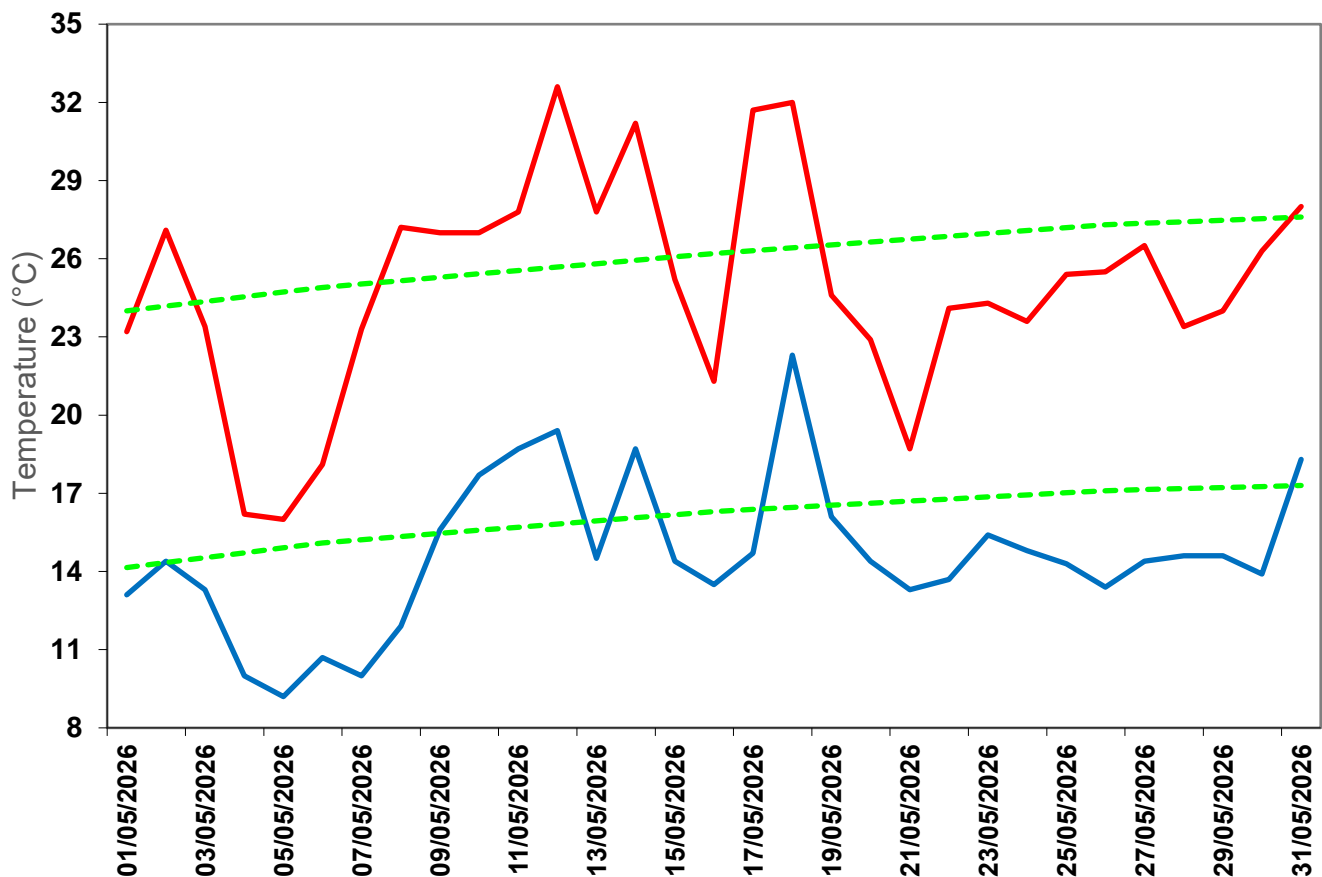
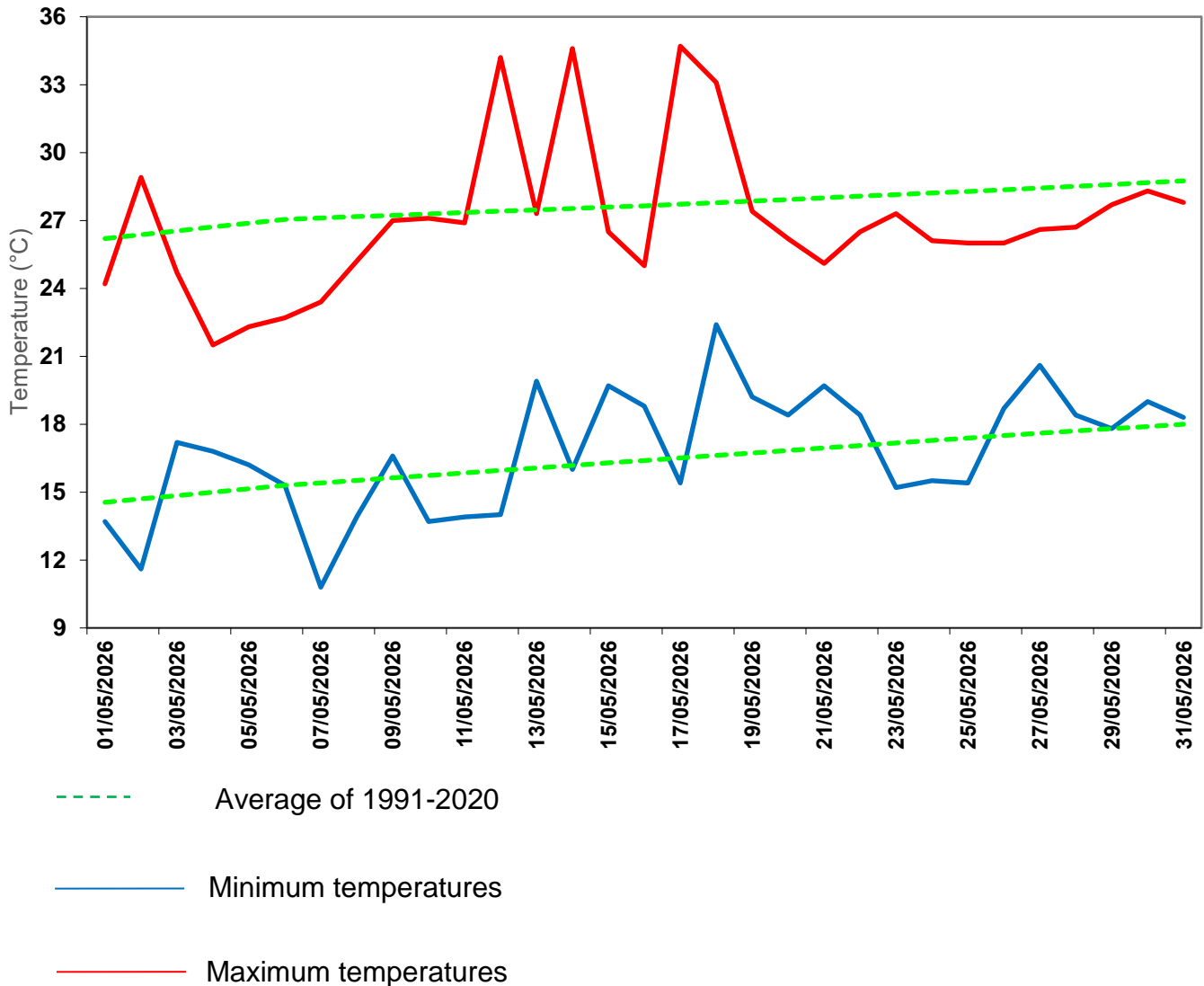


Figure 3: Daily minimum and maximum temperature in Bet Dagan in May 2026 compared with the multi-year average



May 2026 compared with the past

May 2026 was considerably colder than average, and compared with the past it was the coolest May at the national level since May 2008. It followed a sequence of warmer-than-average May months since 2012, the most prominent of which was May 2018, which was the warmest. The coolest May was in 1986 (Figure 4).

The cool conditions of May 2026 were especially pronounced in northern Israel, with daily mean temperatures 2.5 to 3°C below average. In this area, it was the coldest May since 1993 (Figure 5).

Figure 4: Mean daily temperature in Israel* in May, 1950 to 2026

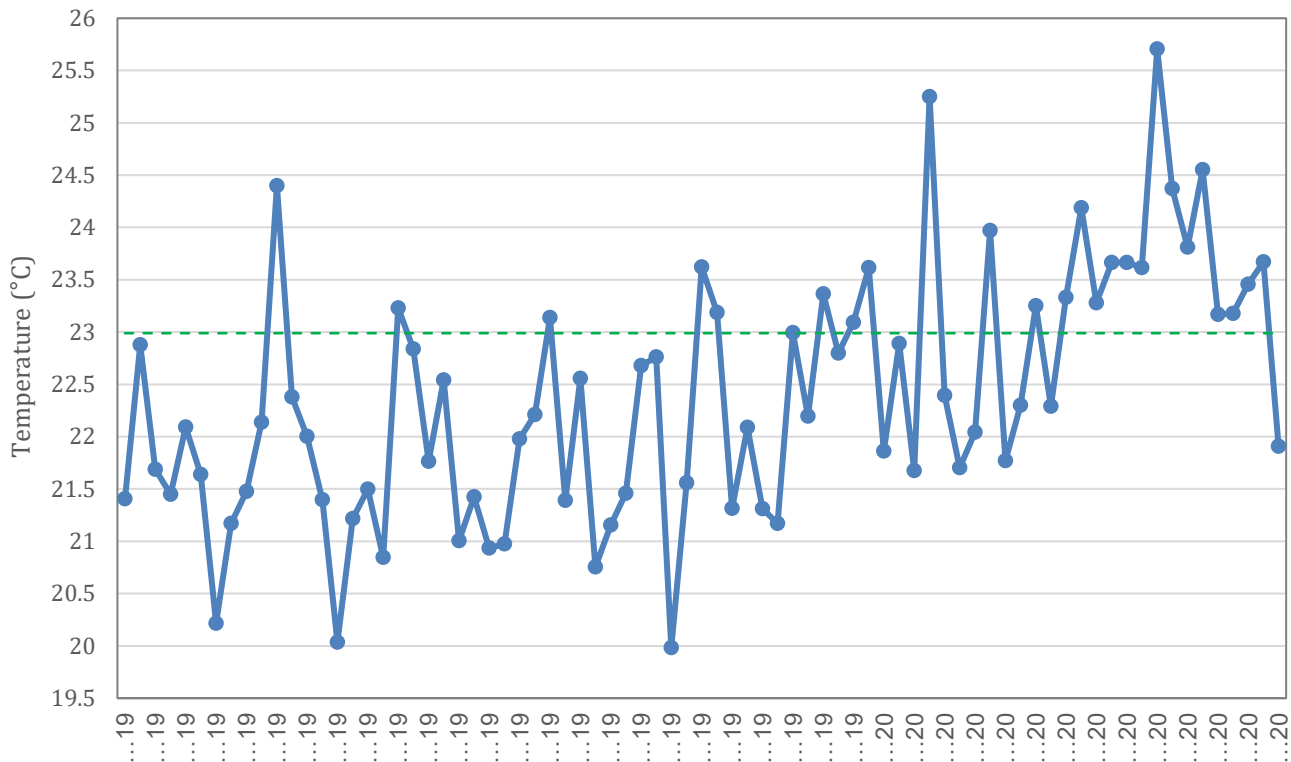
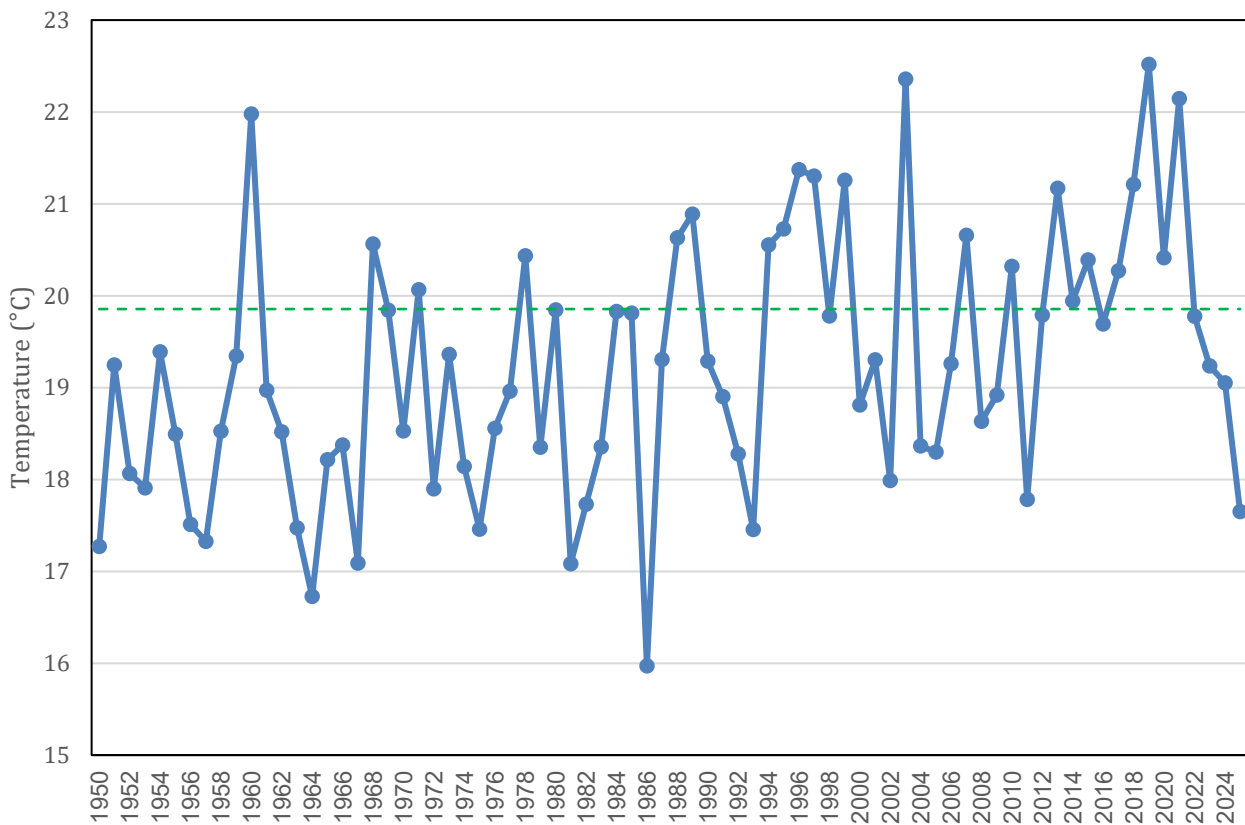


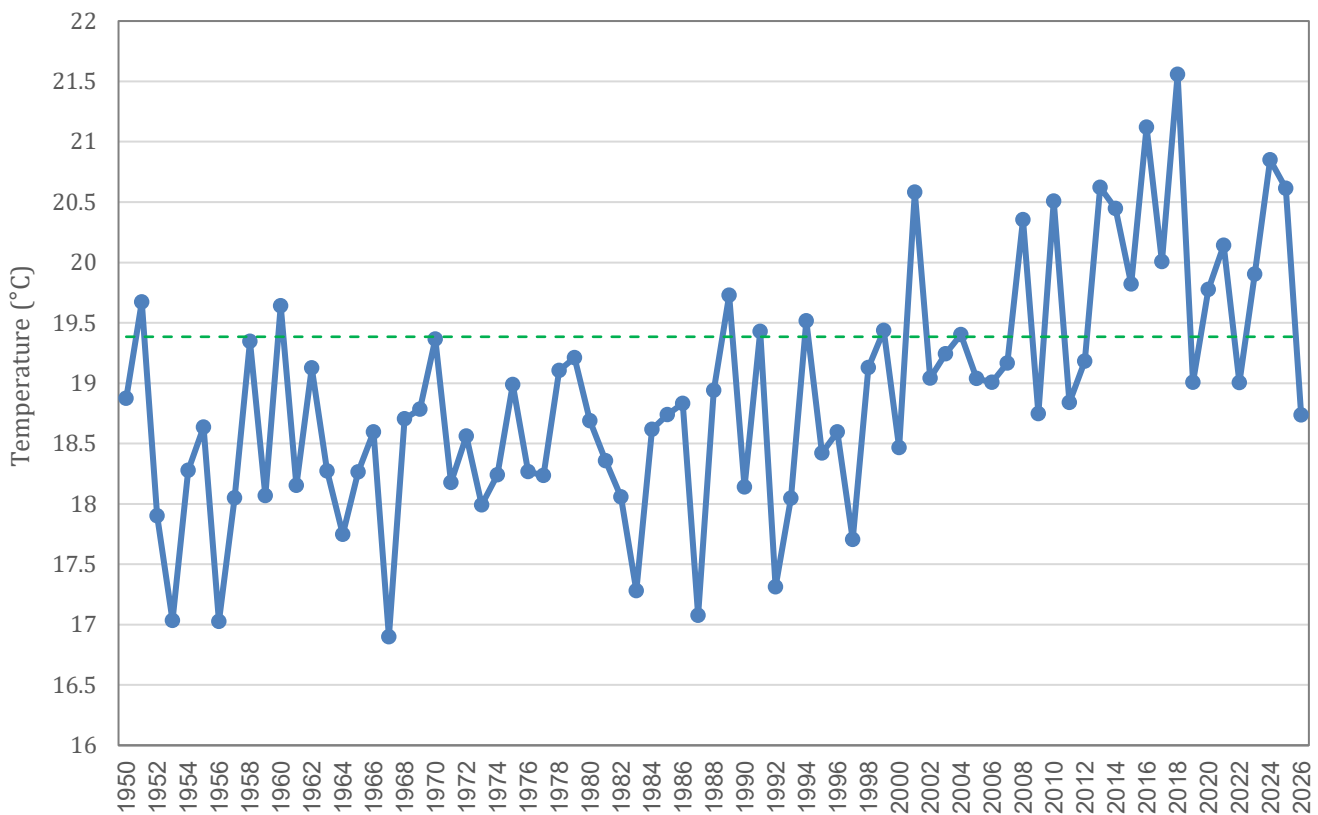
Figure 5: Mean daily temperature in Zefat Har Kenaan in May, 1950 to 2026



Spring 2026 compared with the past

In the two preceding spring months, March and April, temperatures were also below average, so spring 2026 was 0.6 to 0.7°C colder than average (1991 to 2020) at the national level, and it was the coldest spring since spring 2000 (Figure 6). The current spring was about 2°C colder than the two previous springs. It should be noted that in the 20th century, many spring seasons were cooler than the current one, with the coolest in 1967. The warmest spring season occurred in 2018.

Figure 6: Mean daily temperature in Israel* in spring (March to May), 1950 to 2026



--- Average for 1991 to 2020

* To represent the area of Israel, 24 stations throughout the country with homogeneous data since 1950 were selected.